

## PERIMETER AND DISTRIBUTION



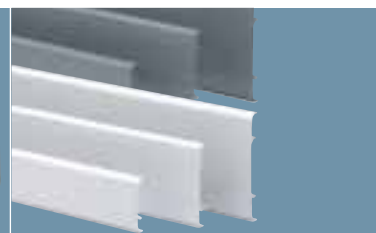
## TRUNKING

3 METRE LENGTHS  
GRY WHI OR CLR\*



## SPARE TRUNKING LID

3 METRE LENGTHS  
GRY OR WHI



50 x 50mm	CLT/1	12m	CLT/50LID	12m
75 x 50mm	CLT/2	12m	CLT/50LID	12m
75 x 75mm	CLT/3	12m	CLT/75LID	12m
100 x 50mm	CLT/4	12m	CLT/50LID	12m
100 x 75mm	CLT/5	6m	CLT/75LID	12m
100 x 100mm	CLT/6	6m	CLT/100LID	12m
150 x 75mm	CLT/7	6m	CLT/75LID	12m
150 x 100mm	CLT/8	3m	CLT/100LID	12m
150 x 150mm	CLT/9	3m	CLT/150LID	12m

Ega Heavy Duty Industrial Cable Trunking is used extensively for industrial wiring purposes. It is available in a large variety of sizes and has found wide acceptance throughout the world. Its durability, safety and strength are well proven. All trunkings have a clip-on cover which enables fast, efficient installation.

Manufactured in accordance with BS 4678 Part 4.

STANDARD LENGTH: 3 metres

MATERIAL: PVC-U

COLOUR: Grey Clear and White

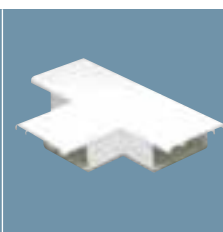
When ordering use colour suffix GRY CLR or WHI

## FLAT TEE

MOULDED  
GRY WHI OR CLR\*

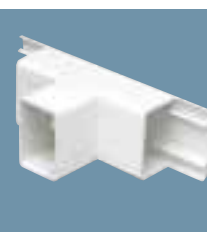


FABRICATED  
GRY WHI OR CLR\*



## EXTERNAL TEE

FABRICATED  
GRY OR WHI



## INTERNAL TEE

FABRICATED  
GRY OR WHI



\*Clear trunking and fittings are only available for list numbers marked in blue. These items are also available in grey or white

50 x 50mm	FTF/1	1	FTE/1	1	FTI/1	1
75 x 50mm	FTF/2	1		1		1
75 x 75mm	FTF/3	1	FTE/3	1	FTI/3	1
100 x 50mm	FTF/4	1	FTE/4	1	FTI/4	1
100 x 75mm	FTF/5	1		1		1
100 x 100mm	FTF/6	1	FTE/6	1	FTI/6	1
150 x 75mm	FTF/7	1		1		1
150 x 100mm	FTF/8	1		1		1
150 x 150mm	FTF/9	1		1		1

